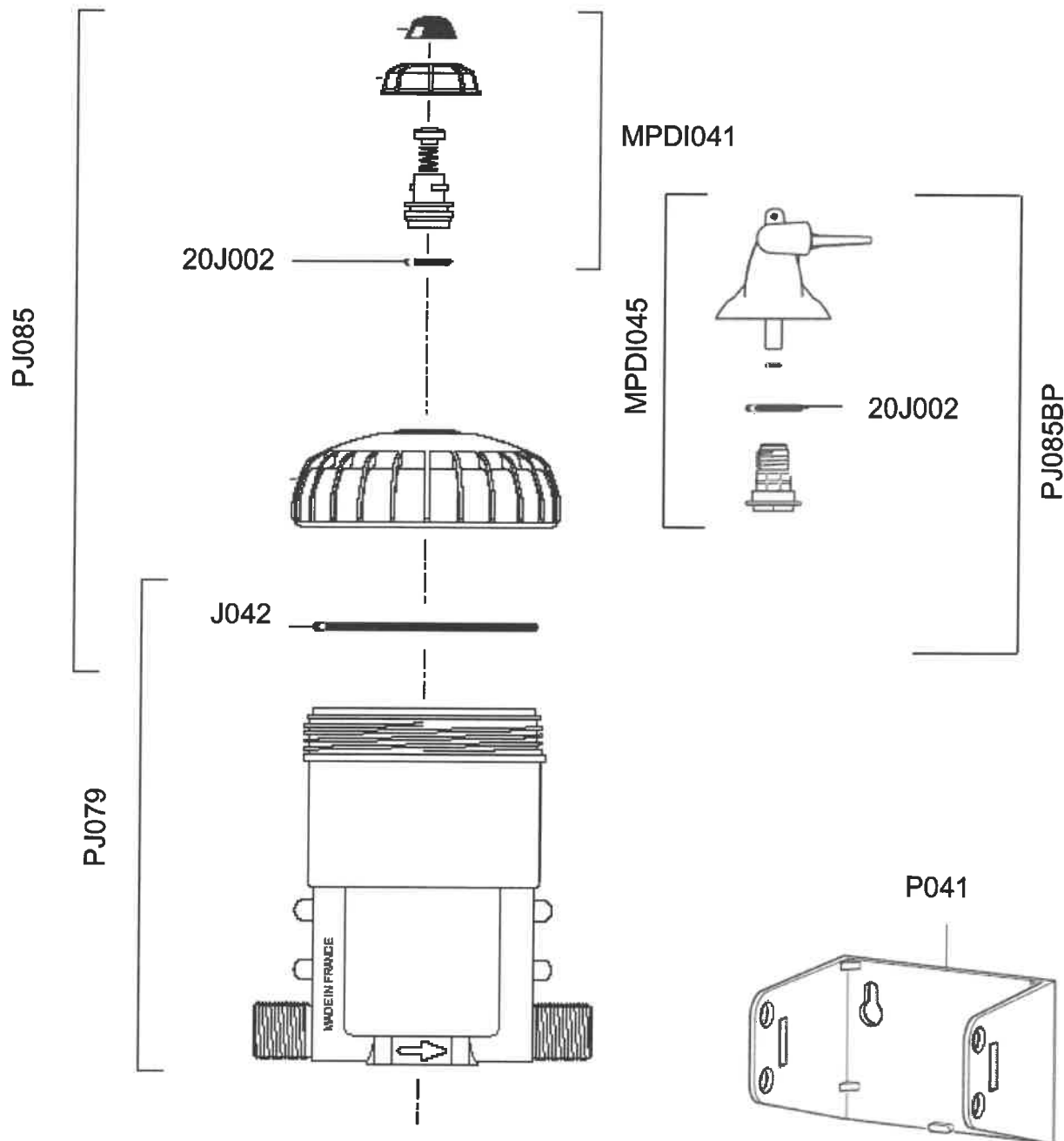


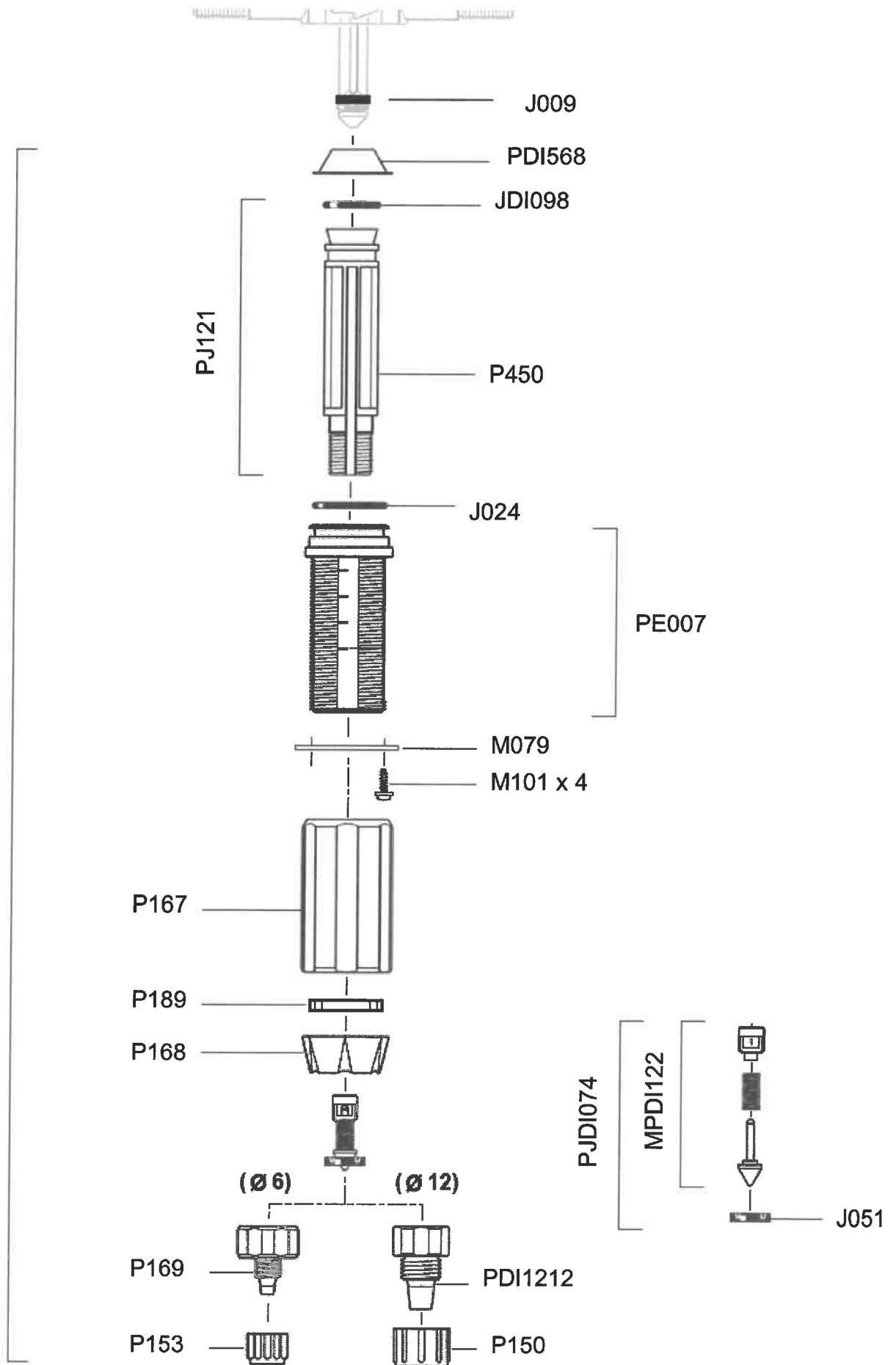
DOSATRON D25RE2

2.5m³/h – 0.2 - 2%
0.3 – 6 bar

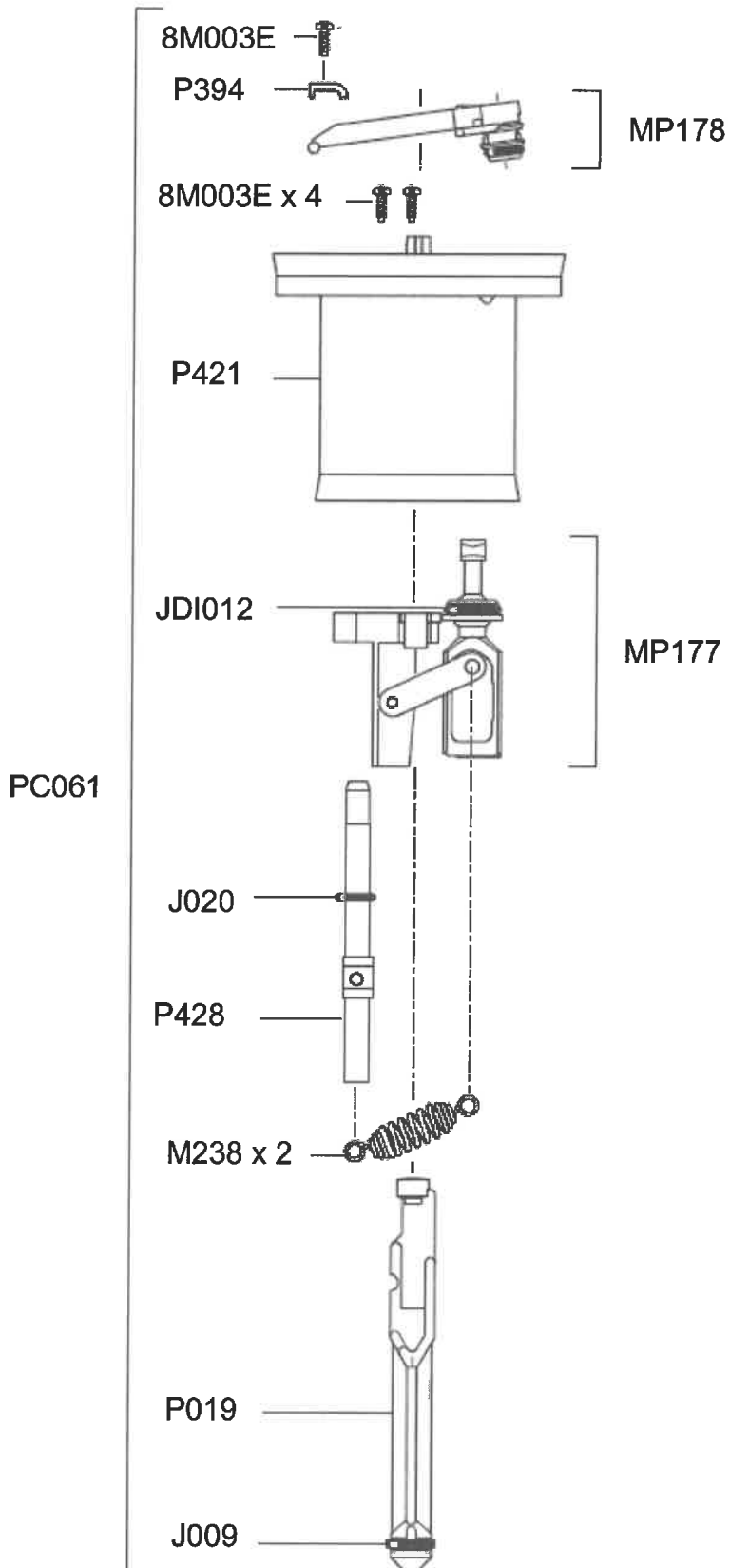


PVDF – PJ079P – Lower Body PVDF and Seal
PJ085P – Top Cap PVDF, Air Bleed and Seal
PJ085BPP – Top Cap PVDF, By Pass and Seal

CD072 (Ø 6)
CD072V (Ø 12)



PJ093 – Seal Set, Non Return Valve and Barbed Fitting (Ø 6):-
(J009, JDI098, J024, J051, MPDI122, P169)
PJ093V – Seal Set, Non Return Valve and Barbed Fitting (Ø 12):-
(J009, JDI098, J024, J051, MPDI122, PDI1212)



DOSATRON D25RE2

2.5m³/h – 0.2% – 2%
0.3 – 6 bar

OPTION "V"

